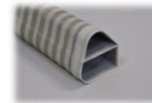




LASD Shielding Composite Cable Ducts



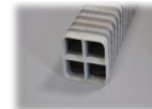
- Innovative EMI/RFI Composite Shielding Solutions
- Ultra-Light Weight System Metal Replacement
- -55°C to 120°C
- Superior Efficiency
- Better Shielding <103 MHz
- Optimal Solution for Mid-Hi Frequencies
- Conductive External Fabric
- FAR25.853 Compliant
- ABD0031 Compliant



**Variable
Stiffness**



**Joint Type
M/F or F/F**



**Multisection
Ducts**



**Application
Optimized**



**Mainly Tubular
Shape**



**Flexible & Ultra
Flexible Ducts**